

Quickstart Guide

English
Version 1.0
November 2008

techsupport@multenet.com

Power Agent Quickstart Guide

Network
10/100 LED lit if 100 Base-T.
Link LED lit if connected to a network.
Activity LED lights as data passes the interface.

Power LED is lit when the device is powered up.

Power
Connect a 5V Power Supply here.



Heartbeat LED flashes during normal operation. Solidly lit there is a problem.

COM1
Connect to UPS

TX1 LED lights as data is transmitted.
RX1 LED lights as data is received.

1. **Connecting Hardware**
 - a. Power Supply
 - b. Ethernet cable
 - c. Serial Cable
2. **Configuring networking**
 - a. Configure IP address
 - b. Configure UPS
3. **Protocol**
 - a. Select the UPS protocol.

1. Connecting Hardware

a. Connecting Power Supply



Connect the supplied 5V Power Adapter to the front of the Power Agent.

b. Inserting Ethernet Cable



Connect your Ethernet to the RJ-45 slot on the front of the Power Agent. The LNK LED will light up if the connection is good. The 10/100 LED will light up if a 100-Base TX connection is available.

c. Connecting to UPS



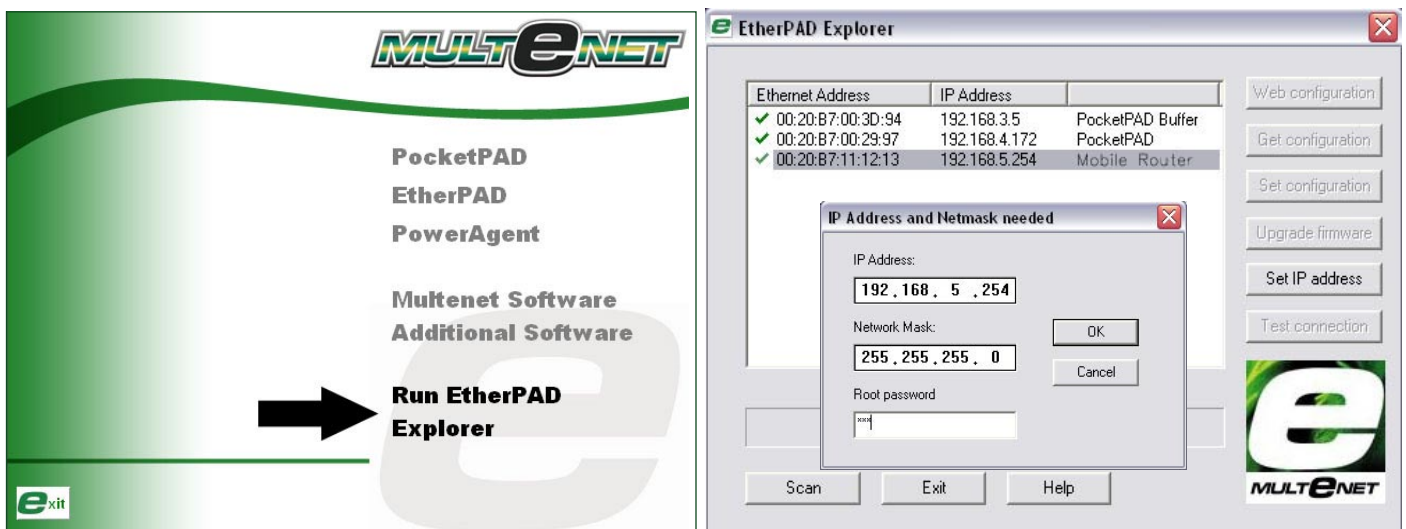
Please use the manufacturer supplied serial cable to attach your Power Agent to the UPS.

2. Networking

a. Configure the IP Address and Subnet Mask using EtherPAD Explorer

1. Ensure that your windows firewall and web browser proxy has been turned off and that the IP Address you plan to assign to the Power Agent is available on your network. If DHCP is used to assign IP Addresses on your network, it is recommended that this IP Address be placed outside of the DHCP scope or be added to the list of excluded addresses.
2. Launch EtherPAD Explorer to quickly find all Multenet units on the local segment. EtherPAD Explorer can be run from the CD, or installed on your PC.
3. By default, the Power Agent is set to obtain a IP Address from a DHCP server. If you have a DHCP server on your network, an IP Address will be assigned. It is recommended that you configure a static IP address for the Power Agent, otherwise, carry on to the next step. Configure the unit's IP Address and Subnet Mask by highlighting the new device and clicking 'Set IP Address'. Enter the desired IP Address, the Subnet Mask of your subnet and the default root password which is factory set to 'xxx'.
4. After setting the IP Address and Network Mask, you can configure the Power Agent by clicking 'Web Configuration'.

Note: The 'Set IP Address' window will appear while the unit is rebooting or if your network parameters are incorrect. Please allow enough time for the unit to reboot. If you still see this window after rebooting, ensure that the IP Address falls within your local subnet.



Web Configuration

After opening the Web Configuration, click on the 'Enter Configuration' button to log onto the Web Configuration.

The default username and password is factory set to:

Username: root

Password: xxx



The following login screen should appear if the network

MENU	UPS IDENTITY INFORMATION														
<p>HOME</p> <p>MANAGEMENT</p> <p>NETWORKING</p> <p>SERIAL</p> <p>MONITORING</p> <p>SUPPORT</p> <p>APPLY CHANGES</p>	<table border="1"> <tr> <td>System ID</td> <td>Power Agent</td> </tr> <tr> <td>Location</td> <td>Unknown</td> </tr> <tr> <td>UPS Manufacturer</td> <td>no connection to UPS</td> </tr> <tr> <td>UPS Model</td> <td>no connection to UPS</td> </tr> <tr> <td>Software Version</td> <td>no connection to UPS</td> </tr> <tr> <td>Software Agent</td> <td></td> </tr> <tr> <td>UPS Protocol</td> <td>MATLA THREE PHASE Change</td> </tr> </table>	System ID	Power Agent	Location	Unknown	UPS Manufacturer	no connection to UPS	UPS Model	no connection to UPS	Software Version	no connection to UPS	Software Agent		UPS Protocol	MATLA THREE PHASE Change
System ID	Power Agent														
Location	Unknown														
UPS Manufacturer	no connection to UPS														
UPS Model	no connection to UPS														
Software Version	no connection to UPS														
Software Agent															
UPS Protocol	MATLA THREE PHASE Change														

Web Configuration Home Page.

3. Protocol

a. Selecting the UPS Protocol.

Once a UPS has been connected, the protocol needs to be set to enable communication. To select the protocol to be used, click on the 'Change' link on the Home Page or Select 'Serial, Protocol' from the Navigation menu on the left.



From the drop-down menu, select the protocol to be used.